



# eXcellence

COMPUTERIZED SEWING MACHINES

---



*No limits for your style*





Shooting location:  
Domaine de Plein-Vent,  
Plan-les-Ouates/Geneva



# elna eXcellence

## WHERE YOUR PASSION MEETS PERFECTION

If you are a sewing or a patchwork and quilting enthusiast, you deserve the best tools to support your passion. From pleasant hobby sewing to highly skilled techniques, with the models in our eXcellence range your wildest dreams will come true. Their advanced functions and absolute precision will allow you to master the art of sewing and bring your creative ideas to life.

### AN IDEAL COMBINATION OF HIGH-LEVEL SKILLS

The sewing machines in the eXcellence range are elna's premium computerized models. These powerful machines offer a wide range of superior functions, exceptional sewing comfort, perfection of stitching and great stability.

With a choice of stitches ranging from 120 to 350 patterns, including 9 mm wide stitches, and a sewing speed of up to 1'200 stitches per minute, you will benefit from the highest level of performance.

### SUSTAINABLE SEWING BY ELNA

With an eXcellence sewing machine, you chose elna's high quality standards and excellent after-sale service. With quality and endurance translating into product durability, your machine's extended lifetime contributes to saving resources and ultimately helps protecting our planet for future generations.

Combining an extra-wide sewing space with an array of quilting features, the elna eXcellence models fulfill all the dreams of passionate quilters.

Thanks to our unique feeding system, all these models grant excellent fabric capability and can smoothly sew a wide range of fabrics. Regular and extremely precise stitches will lend a professional and qualitative finish to all your sewing projects.

A 5-year warranty is automatically included with our products for household use. It well demonstrates that we positively believe in their longevity.



### eXcellence 580+ and 680+

7 mm or 9 mm stitch width and comprehensive functions for efficiency and reliability. Perfect for both beginners and advanced sewists.

### eXcellence 720PRO

Our heavy-duty model with flat bed and powerful motor, ideal for professional users.

### eXcellence 770 and 780+

With an extra-large sewing space, an extensive range of high-end functions and HD touchscreen. The dream of sewing and quilting enthusiasts.

### Compare

The overview on page 10 provides an extensive list of sewing and technical features with the comparison between individual models.



## eXcellence 770 and 780+

### THE PERFECT BLEND OF HIGH PERFORMANCE AND FABULOUS DESIGN

Our eXcellence 770 and 780+ are high-tech computerized sewing machines offering outstanding quality and an astonishing number of high-level features. Countless functions and intuitive operation simplify the sewing process helping you save time and assisting you with advanced techniques.

The elna eXcellence 770 and 780+ are powerful, versatile and comprehensive.

#### EXPERIENCE UNIQUE SEWING COMFORT

The elna eXcellence 770 and 780+ feature a unique ergonomic design and an extremely generous sewing space, which create an optimal environment for working on large sewing, quilting or home decorating projects. Full-intensity LED lighting and a wide LCD touchscreen enhance comfort and make your sewing experience a pleasant and effortless one.

#### A POWERFUL AND RELIABLE COMPANION

With a broad range of superior functionalities, high sewing speed and a choice of over 350 stitches plus alphabet in three fonts, the eXcellence 770 and 780+ will provide you with impressive sewing performance, along with 3 MB built-in storage capacity. These models are built to smoothly sew a wide range of fabrics and to stand up to hours of operation with the same stitch quality.

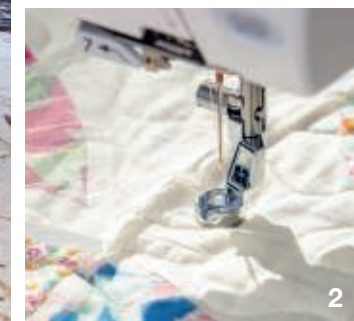


Patchwork and quilting projects featured on this page:  
courtesy of Tilda Fabrics [www.tildasworld.com](http://www.tildasworld.com)

### THE ULTIMATE QUILTING MACHINE

With an exclusive combination of features supporting ambitious projects, the elna eXcellence 780+ is the dream machine for patchwork and quilting enthusiasts.

- ▶ **Extremely large work space**  
Long-arm design and wide throat space, plus extra-wide extension table included. (1)
- ▶ **Dual Feed Plus system**  
Guides multiple layers of fabric in perfect synchronization and with amazing precision.
- ▶ **Professional HP foot and HP needle plate**  
An extraordinary combination for sewing perfect curves and 1/4" topstitching.
- ▶ **Ruler work capability**  
The adjustable ruler foot enables the use of specialized rulers and templates. (2)
- ▶ **Free-motion quilting**  
Four special presser feet are provided, including with open toe. The foot height is adjustable and they can easily be changed with our clip-on system. (3)
- ▶ **Memorized quilting seaming function**  
For efficiently stitching a large number of blocks in the same size.





## UNLIMITED POSSIBILITIES TO EXPRESS YOUR CREATIVITY

You will enjoy using the extensive range of fabulous functions for regular sewing and decorative stitching of the elna eXcellence 770 and 780+.

### ► Sewing Application

A unique feature facilitating twelve common sewing tasks. Just select the desired function and the machine automatically adjusts the appropriate settings and guides you through the various steps and the choice of the suitable presser foot or needle-plate.

### ► 9 mm wide stitches

Add more impact to your creations with 9 mm wide stitches and monograms. An ideal feature for making your decorative stitches bolder and more distinctive. Essential also for enhancing the result of special functions such as tapering (available on the 780+).

### ► Decorative stitches and combinations

Among their 350 stitches, the eXcellence 770 and 780+ offer a myriad of beautiful patterns for your appliqué, sewing or home decoration projects. Unlock boundless variations using mirroring and elongation functions or programming unique stitch combinations.

### ► Variable zigzag

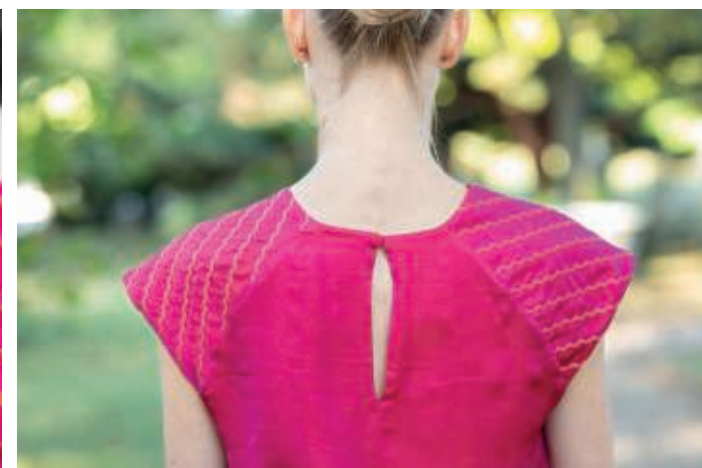
This advanced feature opens marvelous possibilities for free-motion quilting and needle painting. You can increase or reduce the width of the zigzag stitch by simply controlling this function with the knee lifter.

### ► Stitch Composer

Enjoy creating your own stitches! The Stitch Composer software is included with the eXcellence 780+ and enables you to create your unique original stitches or to modify existing ones. You can then easily transfer them to the machine by using the built-in USB port.

### ► Lavish accessory package

The eXcellence 780+ comes with an amazing package of standard accessories, including twenty-one special presser feet and three needle plates. The clip-on system and the one-step conversion make it very easy to change them.



## Haute couture made by elna

Inspired by glamorous 1950's style and Dior's legendary New Look, we created a romantic and sophisticated outfit that showcases the distinctive feminine silhouette defined by a tiny waist and a round full skirt with multiple layers and mid-length hemline.

The use of lavish silk chiffon and taffetas emphasizes the haute couture style and delivers a supremely graceful and elegant look. You will appreciate the optimal features of our eXcellence models when sewing with fragile silk fabrics. The unique 7-piece feed dog combined with control of the presser foot pressure and thread tension will ensure regular and smooth feeding and help you achieve flawless results.

For an exclusive note, we embellished the shoulders with a special pattern created with the help of our Stitch Composer software.

Christian Dior used to say that every woman became a princess wearing his creations. Our tutorials, patterns and special stitch file to make your own princess dress are available at [elna.com/Inspiration](http://elna.com/Inspiration)





## eXcellence 580+ and 680+ A POOL OF SKILLS FOR MAXIMUM EFFICIENCY

Suitable for both the advanced hobby sewist and the beginner, these two models in our eXcellence range provide large sewing space and extensive functions, while ensuring simple operation and highest sewing efficiency. You'll enjoy every moment spent sewing!



### YOUR PROFICIENT SEWING ASSISTANT

Designed to support you in a variety of sewing projects, our eXcellence 580+ and 680+ offer great comfort coupled with impressive stability. Their stylish design and vibrant metallic finish are an invitation to discover their many functions and explore your creative potential. Because they are reliable and far-ranging, they will meet all your needs.

### 7 OR 9 MM STITCH WIDTH AND ALPHABET

You can choose between a range of 120 or 170 utility and decorative stitches, including letters and numbers. The stitch width also varies with 7 mm for the eXcellence 580+ and 9 mm for the 680+. Larger stitches will expand your creative possibilities for decoration and monogramming. In both versions, elna ensures highest stitch quality.



## SWISS DESIGN MAKES THE DIFFERENCE

Along with product quality and user comfort, attention to details is part of our priorities. Original design solutions characterize elna brand sewing machines and make them so special.

### ► Exclusive accessory storage

Featuring a unique accessory compartment in the front cover, the eXcellence 580+ and 680+ offer easy and permanent access to the most frequently used presser feet. This smart design is perfect for organizing the collection of multiple standard accessories for these models, which include 9 and 15 presser feet respectively.

### ► Easy access to functions

Operation is made extremely simple and efficient by direct access to these models' invaluable functions. Function buttons cover start/stop, reverse sewing, automatic lock stitch, up/down needle position and automatic thread cutter. Along with the wide screen displaying key settings for the selected pattern, the touch panel enables the direct selection of four stitches and facilitates control of common functions.

### ► Superior System needle threader

Including an additional thread guide, the advanced design of the built-in superior needle threader ensures extreme precision and accuracy. In a few simple steps, this feature puts an end to fastidious threading and you can start sewing without delay.

### ► Knee-lifter and thread cutter foot control

You can raise and lower the presser foot using the knee lifter and keep your hands free for your work. In addition, you can connect a remote thread cutter switch, available as an optional accessory, and snip the needle and bobbin threads at the same time by just pressing the pedal. Both features are specific to the eXcellence 680+.

# eXcellence 720PRO

## FLAT-BED COMPUTERIZED SEWING MACHINE

The elna eXcellence 720PRO is a computerized sewing machine with a heavy-duty professional construction and a robust aluminium body. Inspired by industrial-type machines, this model is characterized by a flat-bed design, superior features, remarkable endurance and an array of time-saving functions.

Offering a combination of power, performance and durability, you will appreciate the outstanding quality and the broad capabilities of the eXcellence 720PRO:

- Powerful motor making it the fastest model in its category with sewing speed up to 1200 stitches per minute.
- Extra-large sewing area, LED lights and noiseless operation ensuring ideal sewing comfort.
- A choice of 200 stitches and a kit of above 40 standard accessories serving a wide variety of tasks with any type of fabrics.



### STANDARD ACCESSORIES eXcellence 720PRO

Presser feet: standard A, rolled hem D, zipper E, satin stitch F, open-toe satin stitch F2, blind hem G, overlock M, 1/4" seam O, darning PD-H, convertible free-motion quilting set QB-S with three heads, automatic buttonhole R with stabilizer plate, button sewing T, Dual Feed AD and holder (wide type), professional grade 1/4" seam HP.

Professional grade needle plate HP, straight stitch needle plate, quilting guide bar, button shank plate, bobbins, seam ripper, needle set, lint brush, spool holders (small, large and special), spool rests, nets, screwdriver large, accessory box, knee lifter, extra-wide extension table, foot controller large type, instructional video DVD and soft cover.

1



### DUAL FEED SYSTEM

Integrating a unique seven-piece feed dog, the Dual Feed system equips the 720PRO, 770 and 780+. It guides your fabric simultaneously and with amazing precision, and is perfect for quiltwork and for aligning patterns. The removable Dual Feed Plus system with the 780+ offers great flexibility and enables also the use of narrow presser feet which are included.

2



### PROFESSIONAL HP FOOT AND HP NEEDLE PLATE

An extraordinary combination ensuring highest precision for sewing curves and topstitching. With the professional grade 1/4" seam foot HP, used with the HP needle plate, you can easily manage small turns and have high visibility on the needle base. (720PRO and 780+)

3



### ONE-STEP NEEDLE PLATE CONVERTER

Our smart system allows for an effortless conversion of the needle plate in one step by simply pressing a button. You can easily switch from one needle plate to another and use the most suitable one for your project. Available for eXcellence 680+, 720PRO, 770 and 780+.

4



### EXTRA-WIDE EXTENSION TABLE

Provided as part of the standard accessory package of our eXcellence models. for expanded workspace with large sewing projects. (Not included with eXcellence 770).



## TECHNICAL FEATURES

	580+	680+	720PRO	770	780+
Machine size	W475 x H316 x D223 mm	W475 x H316 x D223 mm	W516 x H300 x D220 mm	W528 x H321 x D243 mm	W528 x H321 x D243 mm
Machine weight	9.8 kg	10 kg	11 kg	13.2 kg	13.2 kg
Bed type	Free arm / flat bed convertible	Free arm / flat bed convertible	Flat bed (no free arm)	Free arm / flat bed convertible	Free arm / flat bed convertible
Free arm (length from the needle)	100 mm	100 mm	-	Extra-long (150 mm)	Extra-long (150 mm)
Sewing space	W 210 x H 120 mm	W 210 x H 120 mm	W 255 x H 120 mm	W 280 x H 120 mm	W 280 x H 120 mm
Control panel / Screen type and size	Touch panel / LCD (W 25,5 x H 68 mm.)	Touch panel / LCD (W 25,5 x H 68 mm.)	LCD (W 78,5 x H 47,5 mm)	LCD-HD touch screen (W 62,8 x H 110,9 mm)	LCD-HD touch screen (W 62,8 x H 110,9 mm)
Horizontal rotary hook	X	X	X	X	X
Spool pin	Horizontal type	Horizontal type	Upstanding dual thread stand	Horizontal type	Horizontal type
Auto declutch bobbin winder with thread cutters	X	X	With independent motor	X	X
Easy and guided threading system with thread cutter	X	X	X	X	X
Needle threader	Built-in Superior System	Built-in Superior System	Built-in Superior System	Built-in Superior System	Built-in Superior System
Upper and bobbin thread sensor	-	-	-	X	X
7-piece retractable feed dog	X	X	X	X	X
<b>1</b> Dual Feed System	-	-	Removable / Wide type	Removable system included / Wide and Narrow type dual feed feet optional	Removable / Wide and Narrow type Plus
Thread tension control	Semi-automatic	Semi-automatic	Manual	Automatic	Automatic
Presser foot pressure adjustment	Manual	Manual	Manual from 0 to 3	Automatic	Automatic
Extra-high presser foot position	Manual	Manual	Two positions	X	X
Clip-on easy conversion presser foot	X	X	X	X	X
<b>3</b> One-step needle plate conversion	-	X	X	X	X
<b>2</b> Professional HP needle plate and HP foot	-	-	X	-	X
Lighting	4 white LEDs in 2 areas	6 white LEDs in 3 areas	3 white LEDs in 3 areas	10 white LEDs in 5 areas	10 bright LEDs in 5 areas
Adjustable knee lifter	-	X	X	Optional	X
Stitch reference chart	Top cover	Top cover	Detachable	Top cover	Top cover
Accessory storage	Arm and Elna front storage	Arm and Elna front storage	Accessory case	Arm and Top cover	Arm, Top cover and case
Remote thread cutter port	-	X	X	X	X
USB port	-	-	-	1	1

GENERAL

3

2

SEWING

	580+	680+	720PRO	770	780+
Number of stitches	120	170	200	350	350
Maximum stitch width (mm)	7	9	9	9	9
Maximum stitch length (mm)	5	5	5	5	5
Number of buttonholes	7	10	9	11	11
Typefaces / Alphabets	1/2	1/2	3/3	3/3	3/3
Variable zigzag	-	-	-	X	X
Tapering	-	-	-	-	X
Ruler work	-	-	-	-	X
Max. stitches in combination	50	50	50	100	100
Maximum sewing speed (spm)	820	1000	1200	1060	1060
Variable needle positions	15	91	91	91	91
Stitch Composer software	-	-	-	-	X
Memory (combinations)	Temporary	Temporary	(20)	3 MB	3 MB

### STANDARD ACCESSORIES eXcellence 680+ and 580+\* (only if marked with \*)

Presser feet: standard A\*, rolled hem D\*, zipper E\*, satin stitch F\*, open-toe satin stitch F2\*, blind hem G\*, overlock M\*, overedge C (only 580+), 1/4" seam O\*, closed-toe darning PD-H, convertible free-motion quilting kit QB-S with closed-toe, open-toe and clear-view, even feed, automatic buttonhole R\* and stabilizer plate, button sewing T.

Circular sewing pivot pin\*, quilting guide bar, quilting guide bar for even feed foot, straight stitch needle plate, bobbins\*, 10 unit-kit Easy bobbins, seam ripper\*, needle set\*, lint brush\*, spool holders\* (small, large and special), additional spool pin\*, screwdriver\*, touch panel stylus\*, knee lifter, extra-wide extension table\*, foot controller\*, semi-hard fabric cover\*.

FUNCTIONS WITH EASY-ACCESS BUTTONS

	580+	680+	720PRO	770	780+
Start / Stop	X	X	X	X	X
Reverse sewing	X	X	X	X	X
Automatic lock stitch	X	X	X	X	X
Up / Down needle position	X	X	With memory	With memory	With memory
Automatic presser foot lifter	-	-	-	X	X
Automatic thread cutter	X	X	X	X	X
Bobbin winder	-	-	X	-	-

### STANDARD ACCESSORIES eXcellence 780+ and 770\* (only if marked with \*)

Presser feet: standard A\*, rolled hem D\*, zipper E\*, satin stitch F\*, open-toe satin stitch F2, blind hem G\*, overlock M\*, 1/4" seam O, 1/4" seam without quilting guide O, closed-toe darning PD-H\*, open-toe darning PD-H, free-motion quilting: closed-toe QC, open-toe QO and zigzag QV; variable zigzag QZ, ruler work QR, automatic buttonhole R\* with stabilizer plate\*, button sewing T\*, Dual Feed AD and holder (wide type), Dual Feed Plus HP2 and holder (narrow type), professional grade 1/4" seam HP.

Professional grade needle plate HP, straight stitch needle plate\*, circular sewing pivot pin\*, quilting guide bar, button shank plate\*, bobbins\*, seam ripper\*, needle set\*, lint brush\*, spool holders\* (small, large and special), additional spool pin\*, screwdriver small\*, touch panel stylus\*, knee lifter, extra-wide extension table, cloth guide, foot controller large type or narrow type\*, remote thread cutter switch, accessory case, Stitch Composer software, instructional video DVD or online\*, semi-hard fabric cover\*.





*crafted with love*

Elna International Corp. SA, Geneva, Switzerland

Subject to change without notice

© 2020

[elna.com](http://elna.com)